

# Important information

In some copies of issue 1 there was a slight inconsistency between the step-by-step instructions and the part supplied. The wash-out plug holes in the sides of the cab were not fully drilled out, which affects step 13 in the step-by-step instructions. There are several ways to fix the problem, so by following one of these sets of instructions, you will be able to complete the shell of the driver's cab.

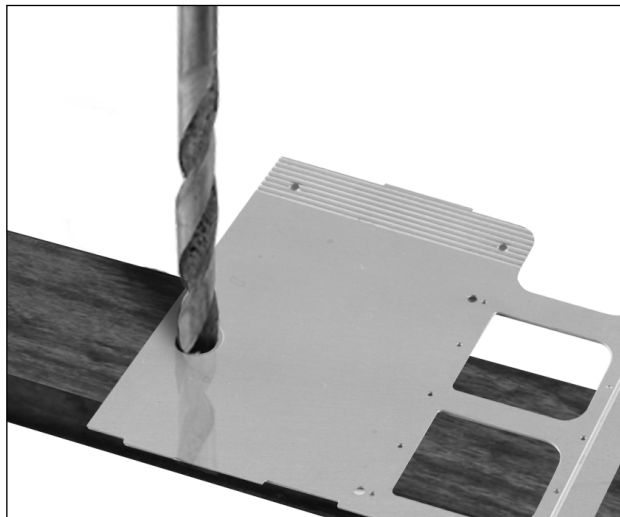
## 1. Drilling method

If you have not proceeded with assembly yet, you can easily drill through the part-drilled recesses.

You will need a punch and hammer, a 4.5mm drill bit, a mini G-cramp and a piece of hardwood. Wrap the jaws of the G-cramp with masking tape to prevent marking the brass.

Working on each cab side in turn, cramp the part-drilled cab side to a piece of hardwood. First, lightly punch the centre of the recesses. Then you can drill out the holes.

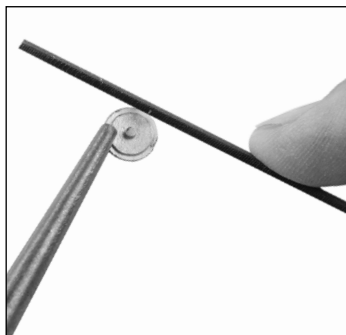
If you do not have a large enough drill bit, you can use a slightly smaller bit, and use a round file to completely open up the hole. Then you can proceed to follow the instructions in issue 1.



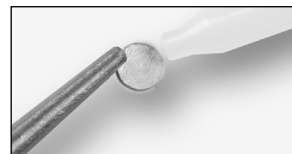
## 2. Filing method

If you have already shaped the cab, it will be more difficult to drill out the wash-out holes. We suggest that you file down the lip of the wash-out plugs as follows.

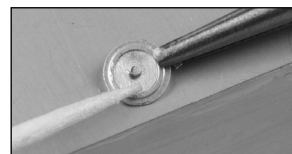
Working on each wash-out plug (part 6) in turn, hold with a pair of pliers and use a 5cm file to remove the lip around the edge of the wash-out plug. You should also thin them down slightly by sanding the back of the wash-out plugs with wet-and-dry sandpaper.



Apply adhesive to the back of the wash-out plugs and glue them in place in the recesses on the sides of the cab.



Finally, fit the wash-out hole beading (part 5) around the edge of the plug.



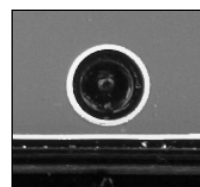
## 3. Painting method

This is an alternative to the filing method.

Simply glue the wash-out beading around the recessed hole.



At the painting stage, you can paint in the detail (the small handle at the centre of the wash-out plug).



We apologise for any confusion this may have caused, and hope that it does not spoil your enjoyment of building the model.

